

Product Specification Sheet

Waverley 1800 All Drawer Slim Wall Hung Vanity Right Hand Bowl With Caesarstone Benchtop – WAVFAS1800WHRCS

Effortlessly curved to elevate any bathroom.

- ✓ When ordering please advise which benchtop finish and cabinet finish you would like
- ✓ 1800 Vanity (also available in 750, 900, 1200 and 1500)
- ✓ Right hand bowl position (also available in either left hand, centre or double position)
- ✓ Wall hung, slim all-drawer model with curved feature ends
- ✓ Choose from any 20mm benchtop Caesarstone (Pages 2 and 3)
- ✓ Bespoke curved thermolaminated v-groove cabinetry available in 4 cabinet finishes (pictured below)
- ✓ Basin not included
- ✓ Hettich AvanTech YOU push-to-open drawers in anthracite
- ✓ Space saver plumbing kit included to conceal plumbing behind drawers
- ✓ Universal Chrome plug and waste included (more colours available at an additional charge)



Adp

CABINET FINISH OPTIONS

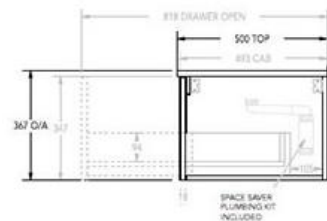
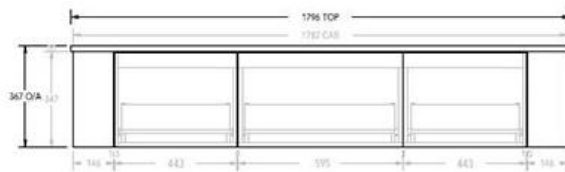
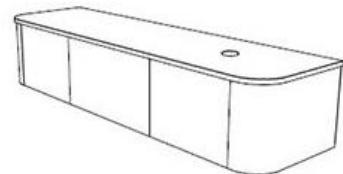
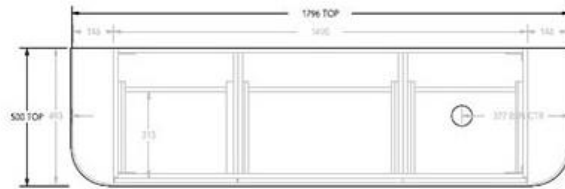


Ultra White Matte

Coastal Oak Woodmatt

Prime Oak Woodmatt

Bottega Oak Woodmatt



Benchtop Finishes

Caesarstone®

FROSTY CARRINA

ORGANIC WHITE


WHITE ATTICA

OCEAN FOAM


INTENSE WHITE

PURE WHITE

NOBLE GREY



CLOUDBURST CONCRETE



ALPINE MIST



- Created from up to 93% natural quartz aggregates, organic pigments and enhanced polymer resins.
- Caesarstone® provides a surface with exceptional properties of heat, stain, scratch and chip resistance.
- Caesarstone® is one of Australia's most recognised brands of quartz surfaces.
- Selection of 12 colours available at regular manufacturing time (see below). Additional colours on request subject to availability. Expect extended manufacturing time of up to 4-6 weeks. (Excludes Supernatural Ultra finishes).


Caesarstone® is made from a natural quartz product, variations in the finish are to be expected.



RUGGED CONCRETE



OYSTER



JET BLACK

Due to limitations in the printing process the colours in this brochure are a guide only. We recommend basing your selection on a physical colour sample, to see colour samples please visit a bathroom retailer. Go to www.adpastralia.com.au/stockists to find a stockist near you. Or visit a Caesarstone selection centre near you.