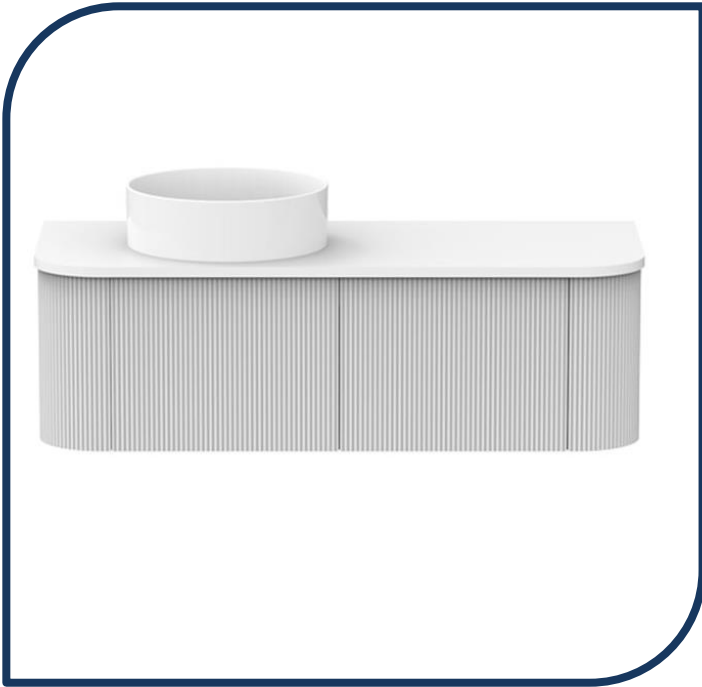


# Product Specification Sheet

## Waverley 1200 All Drawer Slim Wall Hung Vanity Left Hand Bowl With Caesarstone Benchtop – WAVFAS1200WHLCS

Effortlessly curved to elevate any bathroom.

- ✓ When ordering please advise which benchtop finish and cabinet finish you would like
- ✓ 1200 Vanity (also available in 750, 900, 1500 and 1800)
- ✓ Left hand bowl position (also available in either centre or right hand position)
- ✓ Wall hung, slim all-drawer model with curved feature ends
- ✓ Choose from any 20mm benchtop Caesarstone (Pages 2 and 3)
- ✓ Bespoke curved thermolaminated v-groove cabinetry available in 4 cabinet finishes (pictured below)
- ✓ Basin not included
- ✓ Hettich AvanTech YOU push-to-open drawers in anthracite
- ✓ Space saver plumbing kit included to conceal plumbing behind drawers
- ✓ Universal Chrome plug and waste included (more colours available at an additional charge)



Adp

### CABINET FINISH OPTIONS

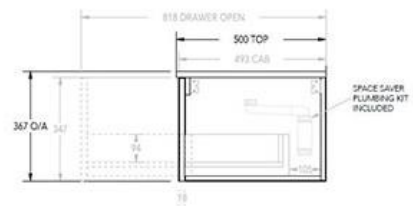
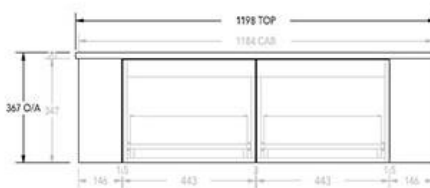
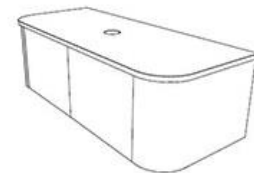
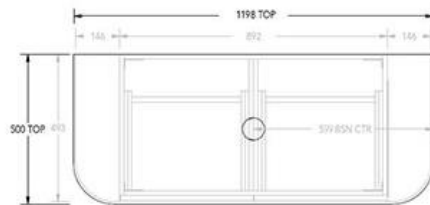


Ultra White Matte

Coastal Oak Woodmatt

Prime Oak Woodmatt

Bottega Oak Woodmatt



# Benchtop Finishes

## Caesarstone®

FROSTY CARRINA

ORGANIC WHITE

WHITE ATTICA

OCEAN FOAM

INTENSE WHITE

PURE WHITE

NOBLE GREY



CLOUDBURST CONCRETE



ALPINE MIST



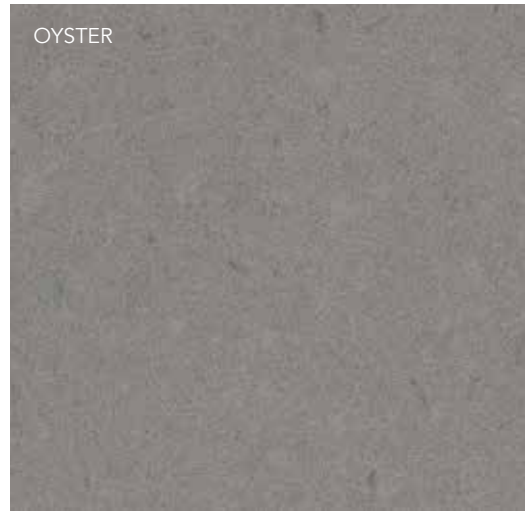
- Created from up to 93% natural quartz aggregates, organic pigments and enhanced polymer resins.
- Caesarstone® provides a surface with exceptional properties of heat, stain, scratch and chip resistance.
- Caesarstone® is one of Australia's most recognised brands of quartz surfaces.
- Selection of 12 colours available at regular manufacturing time (see below). Additional colours on request subject to availability. Expect extended manufacturing time of up to 4-6 weeks. (Excludes Supernatural Ultra finishes).

*Caesarstone® is made from a natural quartz product, variations in the finish are to be expected.*

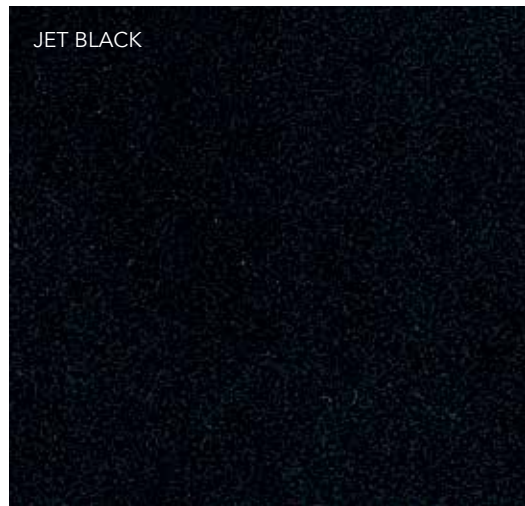
RUGGED CONCRETE



OYSTER



JET BLACK



Due to limitations in the printing process the colours in this brochure are a guide only. We recommend basing your selection on a physical colour sample, to see colour samples please visit a bathroom retailer. Go to [www.adpastralia.com.au/stockists](http://www.adpastralia.com.au/stockists) to find a stockist near you. Or visit a Caesarstone selection centre near you.