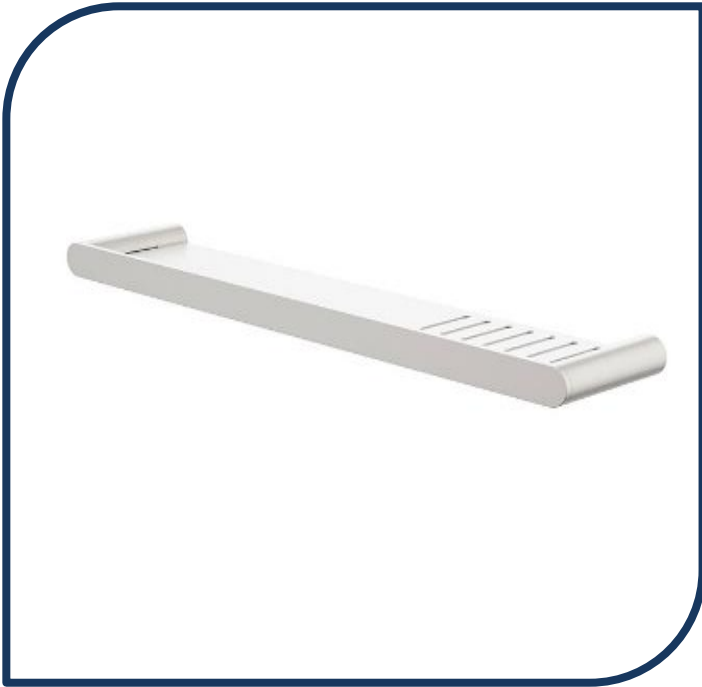


Product Specification Sheet



Urbane II Bathroom Shelf Brushed Nickel – 99619BN

Complete your bathroom with Caroma's range of Urbane II bathroom accessories. The contemporary design and thin-edge details will complement the rest of your choices from the collection.

- ✓ Bathroom shelf
- ✓ 475mm in length
- ✓ Metal construction ensures durability
- ✓ Contemporary design and thin edge details to suit modern bathroom
- ✓ Match with the rest of Urbane II Bathroom Accessories Collection
- ✓ Brushed Nickel finish (also available in brushed brass, gunmetal, matte black and chrome)

