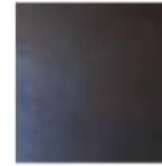


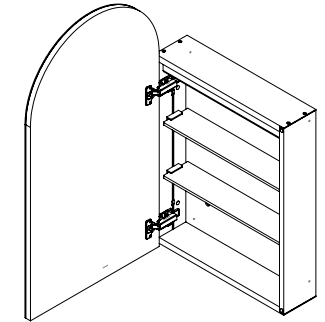
# BLANCA 500

## LED SHAVING CABINET



Matte Black

With Matte Black Aluminum Frame  
BR50D-MB



### SPECIFICATIONS

WIDTH	500mm
HEIGHT	900mm
DEPTH	146mm
WEIGHT	18.25kg
ORIENTATION	Portrait

### LIGHTING SPECIFICATIONS

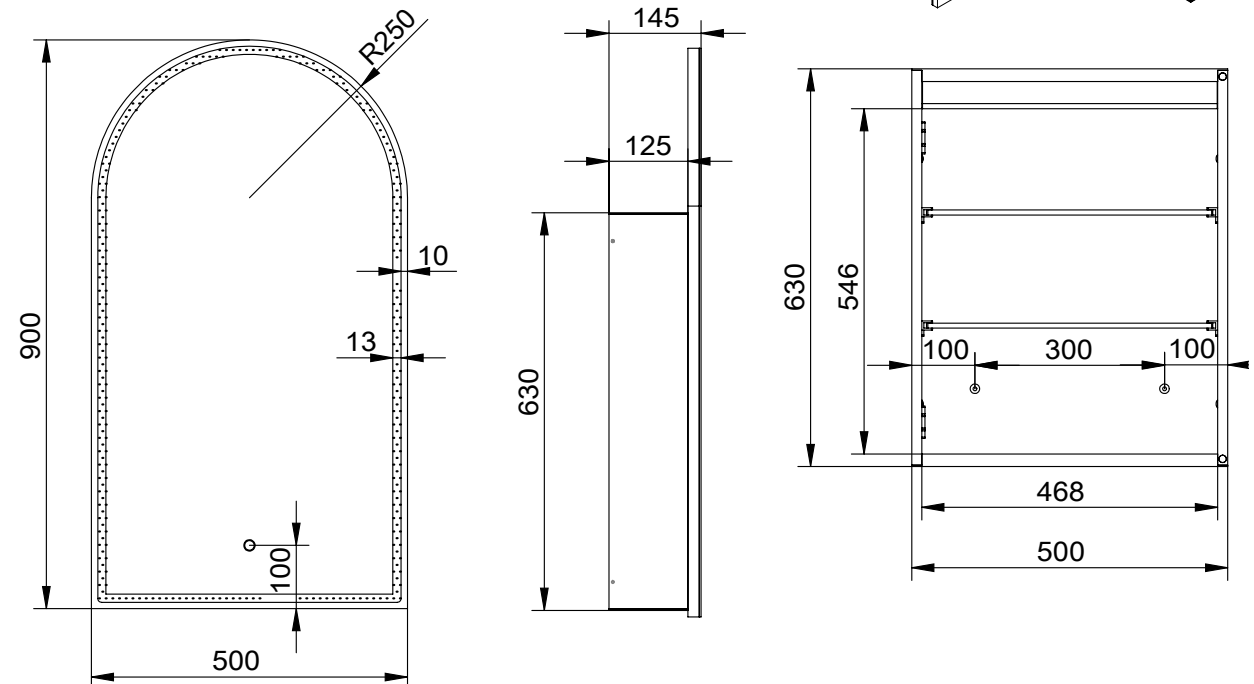
CCT	6500K – daylight
CRI	>80

### INSTALLATION

Wall mount
Hardwired
Input voltage: 220-240v 50Hz
Includes wall mount split batten
Mounting holes are provided for semi-recessed mounting

### FEATURES

Copper Free Mirror
LED Lighting
Frontlit
Touch Sensor
Demister
Soft Close
Concealed Wire Technology
Two Adjustable Glass Shelves
Single-Sided Mirror Door (door opens right to left)
Semi-recessable



Disclaimer: All LED Products requiring hardwiring must be installed by a licensed electrician in accordance with local regulations. Sizes are in mm and nominal and should be checked prior to installation. Actual colours may vary so please check colour samples before ordering. Installation is acceptance of our products. Installation of faulty, warped, chipped or damaged products will void our warranty.