

SYSTEM : PROMASEAL® Conduit Collars through Hebel Wall Systems

NUMBER : 64

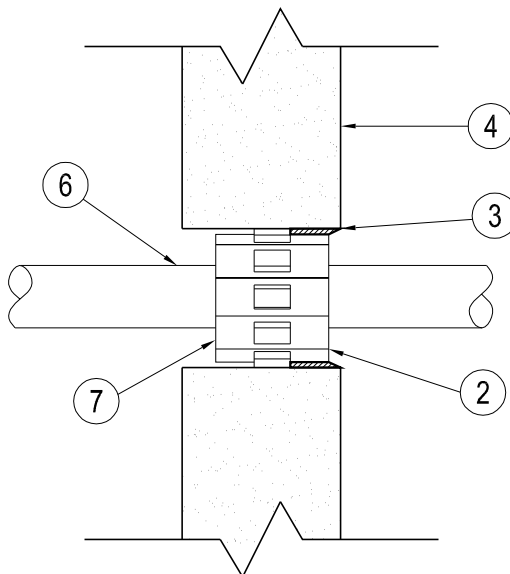
Promat



www.promat-ap.com

**PROMAT AUSTRALIA
PTY. LTD.**

Pipe	Size	FRL
upvc	20mm	-/180/180
upvc	25mm	-/120/120



FRL :
up to -/180/180

Report / Opinion :
**A-12-761
A-12-763
A-13-816**

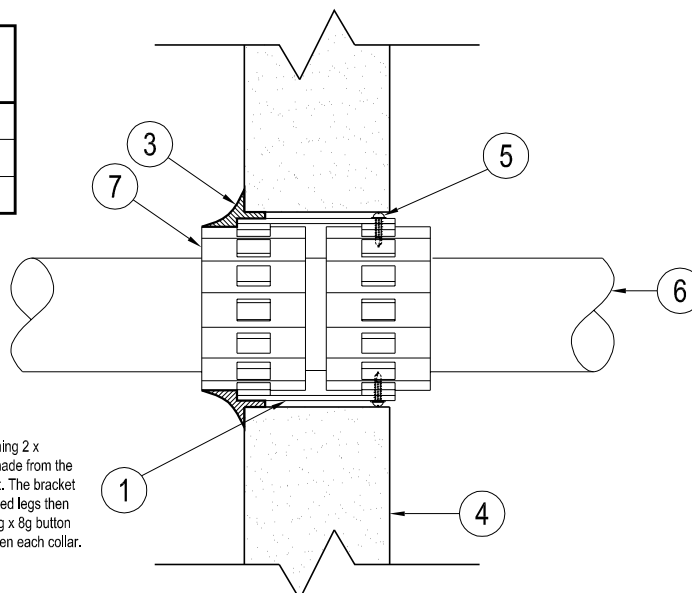
System thickness (mm)
75

System Mass (Kg/m²)
n/a

BENEFITS :

- Installation from one side for protection from either way
- Various pipe types and sizes

Pipe	Size	FRL
PEX-a	20mm	-/180/120
PEX-a	25mm	-/180/90
K1 (Pex/AL/Pex)	20mm	-/120/120



A double PROMASEAL® CFC 32 is made by attaching 2 x PROMASEAL® CFC 32 together using the straps made from the original mounting brackets with the legs flattened out. The bracket is clipped on to the first as per normal and the flattened legs then are screw fixed to the second collar using 16mm long x 8g button head screws. 15mm of separation is required between each collar.

LIMITATIONS :

- This installation method is limited to these sizes and types of pipe. As well as this type of wall system

NO.	DESCRIPTION	SIZE
1	PROMASEAL® Conduit Collar (Double)	32mm dia
2	PROMASEAL® Conduit Collar (Single)	32mm dia
3	PROMASEAL® AN Acrylic Sealant	-
4	Hebel Panel	min 75mm Thick
5	Button Screw	16mm long
6	Plastic Pipe (See table for sizes and types allowable)	-
7	PROMASEAL® GrafiteX Paste to fill gap between pipe and collar	10mm thick

DESCRIPTION :

PROMASEAL® Conduit Collars. Protection of various type and size of plastic pipe through Hebel panels

Note : Structural stability for building elements refer to structural engineer

**For more information please contact
Promat Australia - 1800 PROMAT**

Release Date :

8/5/2013

Signed :

PB

Section Page :

01